

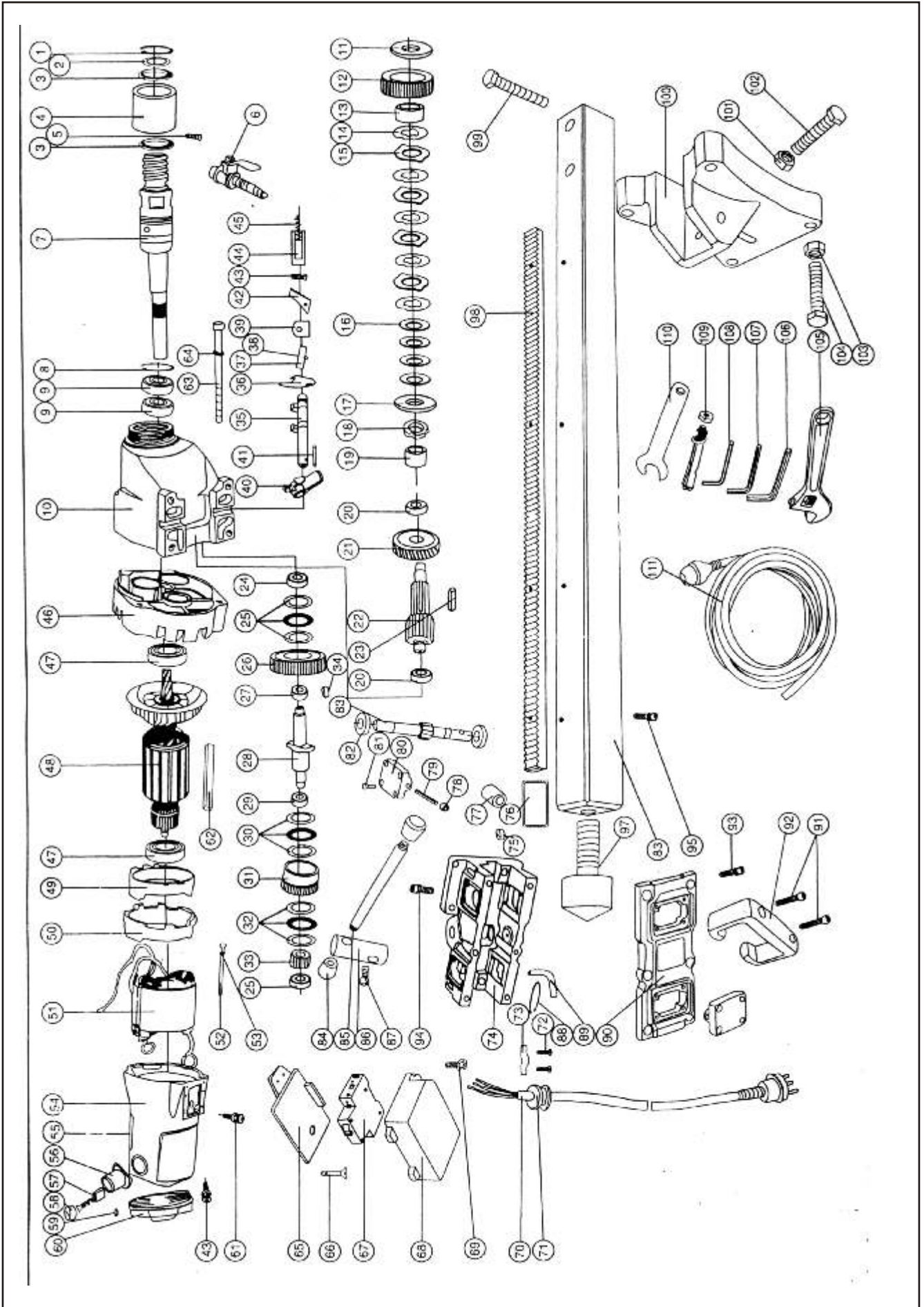


Breakdown and Part list
Schéma et le liste de pièce

12" Core Drill / *Carotteuse 12"*
(CD12)



Tel.: 1-877-405-2626, Fax: 1-877-405-8686
web site: www.cm-equip.com
e-mail: info@cm-equip.com



Part No.	Description	Supply No.
CD12-01	Spring ring for holes	φ55x2
CD12-02	Washer	255/014
CD12-03	Rubber sealing	42x55x8
CD12-04	water sealer	255/020
CD12-05	fixing screw	M5x6
CD12-06	water switch	1/4"
CD12-07	main spindle	255/021
CD12-08	Spring ring for holes	52
CD12-09	wiudraw ball-bearing	6025
CD12-10	gear box	255/028
CD12-11	pressing ring	255/013
CD12-12	No.8 gear	255/017
CD12-13	spindle protector	/015
CD12-14	outer rubber	/016
CD12-15	inner rubber	0/018
CD12-16	butterfly leaf	A40
CD12-17	cutch ring	/019
CD12-18	circle spring net	M20x1.5
CD12-19	multi-roll bearing	BK1816
CD12-20	wiudraw ball-bearing	6201
CD12-21	No.2 gear	180-13
CD12-22	Gear spindle	255/033
CD12-23	plate key	4x12
CD12-24	wiudraw ball-bearing	`6201
CD12-25	pushing roller-pin bearing	AXK1730
CD12-26	No.4 gear	255/029
CD12-27	Copper tube	255/026
CD12-28	Change spiudle	/025
CD12-29	Copper tube	/027
CD12-30	pushing roller-pin bearing	AXK4060
CD12-31	No.6 gear	255/031
CD12-32	pushing roller-pin bearing	AXK3047
CD12-33	No.7 gear	255/032
CD12-34	plate key	4x16
CD12-35	Mechanic stick	255/002
CD12-36	Spring poard	/001
CD12-37	Pin	/022
CD12-38	Spring circle pin	2.5x20
CD12-39	Sponge sealing tube	255/003
CD12-40	Button	255/004

Part No.	Description	Supply No.
CD12-41	Couical pin	3x25
CD12-42	Small butt plate	
CD12-43	Pan head screw	M4x10
CD12-44	spring	255/024
CD12-45	spring	/023
CD12-46	mid-cover	/012
CD12-47	wiudraw ball-bearing	6201
CD12-48	armature	255/101
CD12-49	draught ring	255/009
CD12-50	stop ring	255/010
CD12-51	stator assemldy	255/201
CD12-52	inner hexagonal screw	M5x85
CD12-53	spring washer	ϕ5
CD12-54	housing	255/008
CD12-55	name plate	/34
CD12-56	bush holder assembly	180-23
CD12-57	brush assembly	7x17
CD12-58	brush cap	180-23/1
CD12-59	fixing screw	M5x16
CD12-60	rear cover	255/007
CD12-61	grounding spring	M5x10
CD12-62	longitudingd key	10x8x20
CD12-63	inner hexagonal cylindrieal screw	M6x100
CD12-64	spring washer	ϕ6
CD12-65	cap of switch box ltd	255/006
CD12-66	falling down screw	M4x10
CD12-67	swtich	255/0-11
CD12-68	swtich box	255/0-05
CD12-69	ranhead screw	M4x16
CD12-70	three-core cable plug	1.5mm X 3
CD12-71	sheath	180-22
CD12-72	cable pange	180-02
CD12-73	panhead screw	M4x14
CD12-74	lifter	255/301
CD12-75	satting screw	M12
CD12-76	adjusting bit	255/308
CD12-77	sliding wheel	/304
CD12-78	copper tube	/307
CD12-79	pin	/309
CD12-80	supporting case for sliding wheel	/303

Part No.	Description	Supply No.
CD12-81	Inner hexagonal cylindrical screw	M5x16
CD12-82	wiudraw ball-bearing	6003
CD12-83	operating gear spindle	255/305
CD12-84	handle plastic	
CD12-85	operating stick for machine caso	180-28
CD12-86	lengthen sheath	180-29
CD12-87	Inner hexagonal cylindrical screw	M8x20
CD12-88	spring washer for holes	φ35
CD12-89	actuating pin	255/315
CD12-90	lifler cover	302
CD12-91	handle plastic	
CD12-92	Inner hexagonal cylindrical screw	M8x35
CD12-93	Inner hexagonal cylindrical screw	M8x20
CD12-94	Inner hexagonal cylindrical screw	M8x25
CD12-95	Inner hexagonal cylindrical screw	M6x14
CD12-96	square pipe	255/311
CD12-97	spire	180-27
CD12-98	rack	18028
CD12-99	hexagonal	M12x65
CD12-100	plate	255/311
CD12-101	hexagonal screw nut	M10
CD12-102	hexagonal screw nut	M10x85
CD12-103	hexagonal screw nut	M16
CD12-104	hexagonal	M16x75
CD12-105	spanner	8"
CD12-106	Inner hexagonal spanner	5mm
CD12-107	Inner hexagonal spanner	6mm
CD12-108	Inner hexagonal spanner	8mm
CD12-109	expansion bolt	M16
CD12-110	fixing spanner	
CD12-111	pipe withconnector	